

2-CHLORO-1,4-DIMETHOXYBENZENE (CME)

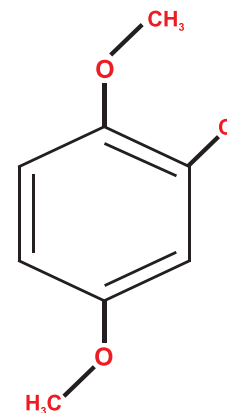
Introduction

2-Chloro-1,4-dimethoxybenzene (CME) is a clear, colourless to slightly yellow coloured liquid with an aromatic odour.

CME is manufactured by the chlorination of 1,4-Dimethoxybenzene. It is used in the manufacture of downstream derivatives, which are further used to produce dyes & pigments.

CME may have an adverse effect on human health. It is harmful if swallowed, causes slight skin irritation and eye irritation. CME may also have adverse effects on the environment.

Chemical Identity



NAME	:CME
CHEMICAL NAME	:2-Chloro-1, 4-dimethoxybenzene
SYNONYM	:2,5-Dimethoxy chlorobenzene
CAS NO	:2100-42-7
MOLECULAR FORMULA	:C ₈ H ₉ O ₂ Cl
MOLECULAR WEIGHT	:172.61 g/mol

2-CHLORO-1,4 DIMETHOXYBENZENE (CME)

Physical & Chemical Properties

Appearance	: Clear colourless to light yellow liquid
Odor	: Aromatic odour
Purity by GC	: Min 99.0%
Freezing Point	: < 8°C
Boiling Point	: 246-248°C
Density at 25°C	: 1.2±0.1 g/cm ³
Solubility in Solvents	: Soluble in Methanol, Chloroform, Ether etc.
Explosive Properties	: Non-Explosive

Uses & Applications

CME is used as a building block for various dye intermediates & pigments, some of which are as follows:

CME is used in the manufacture of Naphthol AS-IRG, an intermediate which is further used to manufacture pigment yellow 49/83/97/176 & other azoic dyes.

CME is also used in the manufacture of Naphthol AS-LC, which is further used to manufacture pigment red 146/184.

Packaging & Shelf Life

CME is Packed in 200 Kg HDPE drums & an ISO Tank. The product has a shelf life of one year from its manufacturing date, when kept in its original packaging. Keep the product in a tightly closed container, away from light and oxidizing products.

Disclaimer

THE INFORMATION CONTAINED IN THIS DOCUMENT IS GIVEN IN GOOD FAITH ON OUR CURRENT KNOWLEDGE. IT IS ONLY AN INDICATION AND IS NOWAY BINDING, PARTICULARLY AS REGARDS INFRINGEMENT OF OR PREJUDICE TO THIRD PARTY RIGHTS THROUGH THE USE OF OUR PRODUCTS. WE GUARANTEE THAT OUR PRODUCT COMPLIES WITH OUR SALES SPECIFICATIONS. THIS INFORMATION MUST ON NO ACCOUNT BE USED AS A SUBSTITUTE FOR NECESSARY PRIOR TESTS WHICH ALONE CAN ENSURE THAT A PRODUCT IS SUITABLE FOR ITS GIVEN USE. USERS ARE RESPONSIBLE FOR ENSURING COMPLIANCE WITH LOCAL LEGISLATION AND FOR OBTAINING THE NECESSARY CERTIFICATIONS FROM AUTHORITIES. USERS ARE REQUESTED TO CHECK THAT THEY ARE IN POSSESSION OF THE LATEST VERSION OF THIS DOCUMENT AND WE ARE AT THEIR DISPOSAL TO SUPPLY ANY ADDITIONAL INFORMATION.